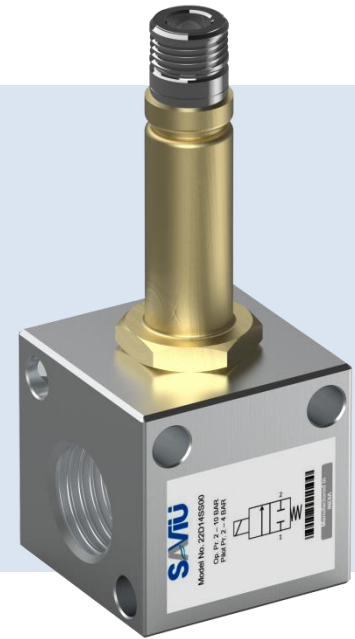
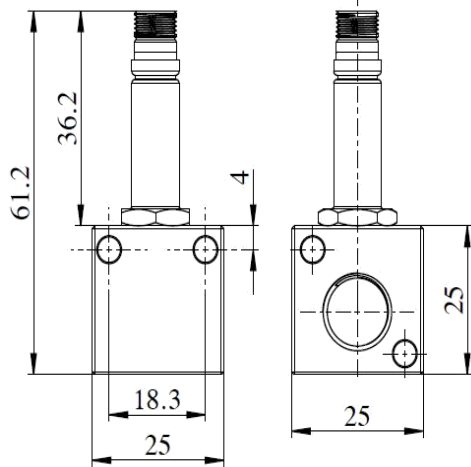


## 2X2 Direct Acting Valve



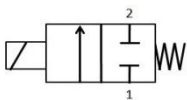
### Technical Data

A 2/2 valve is a type of standard mechanical valve that is activated by electrical power. These valves are direct acting with 2 ports and 2 positions. Application of 2/2 valves is found in mainly for switching on/off the pressure in pneumatic circuits.

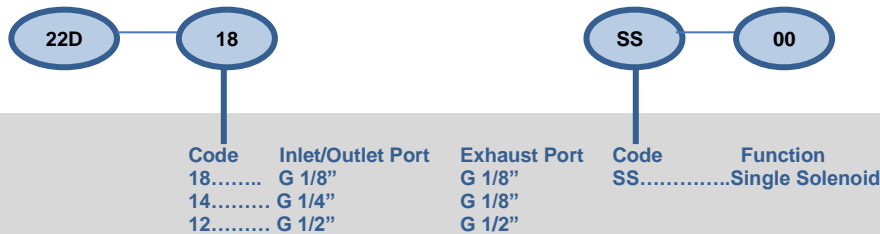
#### Design features and materials

<b>Aluminum parts</b>	Aluminum alloy
<b>Steel Parts</b>	Steel with surface treatment
<b>Springs</b>	Spring steel with surface treatment or S.S.
<b>Plastic parts</b>	POM, PA, Nylon
<b>Sealing elements</b>	Nitrile rubber

#### Circuit function



<b>Model</b>	<b>32</b>
<b>Design</b>	Direct type
<b>Medium</b>	Compressed air- Dry, filtered, Lubricated
<b>Working Pressure range</b>	2-10 Bar
<b>External Pilot pressure</b>	2-4 Bar
<b>Recommended oil for lubrication</b>	ISO VG32(Servo system 32)
<b>Ambient/Medium temperature</b>	5°-60°C
<b>Flow</b>	Inlet & Outlet Port-
	G 1/8" - 20 LPM @10 bar
	G 1/4" - 100 LPM @10 bar
	G 1/2" - 150 LPM @10 bar
<b>Electrical</b>	
<b>Voltage(V) ± 10%</b>	AC (50Hz) – 24V,48V,110V,220V
	DC – 12V,24V,48V,110V
<b>Power consumption</b>	AC – 6VA, DC – 6W
<b>Duty cycle</b>	Continuous
<b>Class of insulation</b>	<b>Class F</b>



#### Order Code:-

While ordering valve, please mention the suffix given above.

#### Example:-

The ordering no. for 2X2 Single solenoid without valve with port size G1/8" is **22D18SS00**.