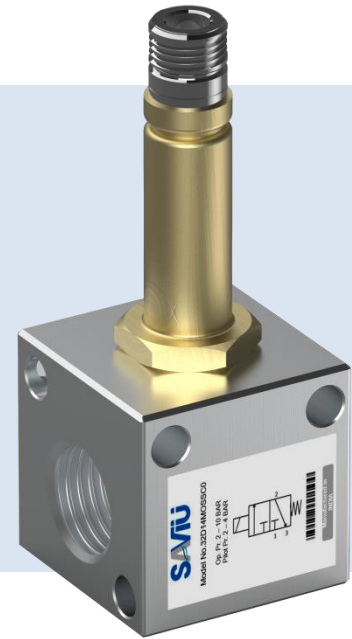
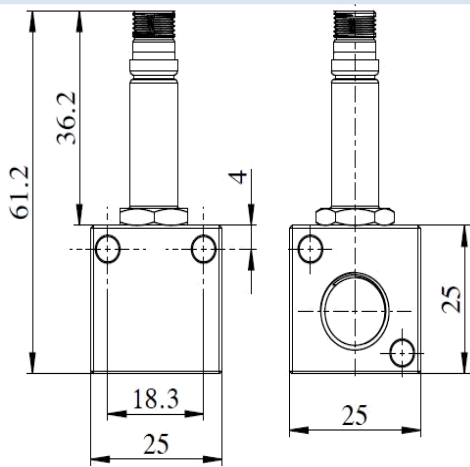


3X2 Direct Acting Valve



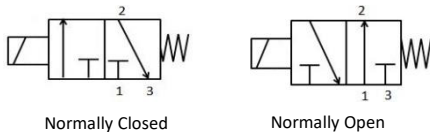
Technical Data

A 3/2 valve is a type of standard mechanical valve that is activated by electrical power. Application of 3/2 valves is found in mainly for switching on/off the pressure in pneumatic circuits.

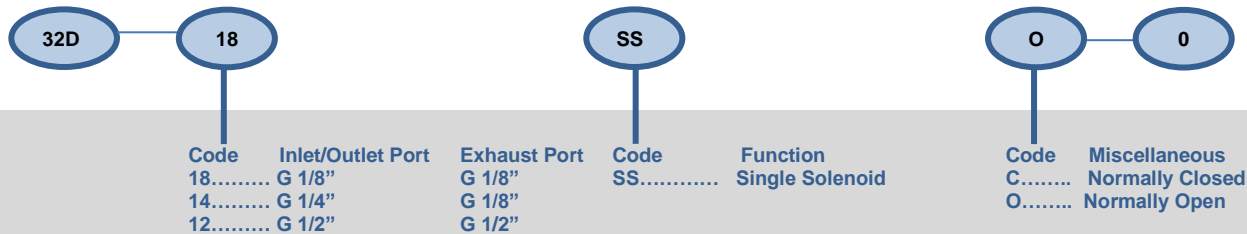
Design features and materials

Aluminum parts	Aluminum alloy
Steel Parts	Steel with surface treatment
Springs	Spring steel with surface treatment or S.S.
Plastic parts	POM, PA, Nylon
Sealing elements	Nitrile rubber

Circuit function



Model	32
Design	Direct type
Medium	Compressed air- Dry, filtered, Lubricated
Working Pressure range	2-10 Bar
External Pilot pressure	2-4 Bar
Recommended oil for lubrication	ISO VG32(Servo system 32)
Ambient/Medium temperature	5°-60°C
Flow	Inlet & Outlet Port- G 1/8" - 20 LPM @10 bar G 1/4" - 100 LPM @10 bar G 1/2" - 150 LPM @10 bar
Electrical	
Voltage(V) ± 10%	AC (50Hz) – 24V,48V,110V,220V DC – 12,24,48,110
Power consumption	AC – 6VA, DC – 6W
Duty cycle	Continuous
Class of insulation	Class F



Order Code:-

While ordering valve, please mention the suffix given above.

Example:-

The ordering no. for 3X2 Single solenoid normally open valve with port size G1/8" is **32D18SSO0**.