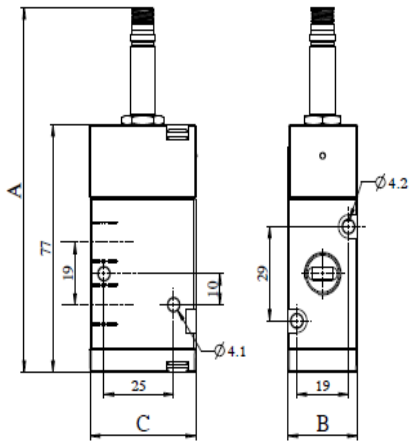


## 3X2 Single Solenoid Pilot Operated Valve



### Technical Data

A 3/2 single solenoid spring return valve is a type of standard mechanical valve that are activated by electrical power.

Normally open and normally closed are the two variants available in 3/2 single solenoid valves.

They find their application mainly in pneumatic circuit for switching on/off the air pressure.

Namur type is also available which are directly connected to pneumatic actuators.

#### Design features and materials

<b>Aluminum parts</b>	Aluminum alloy
<b>Steel Parts</b>	Steel with surface treatment
<b>Springs</b>	Spring steel with surface treatment or S.S.
<b>Plastic parts</b>	POM, PA, Nylon
<b>Sealing elements</b>	Nitrile rubber

#### Circuit function



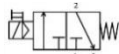
Normally open without MO



Normally closed without MO



Normally open with MO



Normally closed with MO

<b>Model</b>	<b>32</b>
<b>Design</b>	Spool type
<b>Medium</b>	Compressed air- Dry, filtered, Lubricated
<b>Working Pressure range</b>	2-10 Bar
<b>External Pilot pressure</b>	2-4 Bar
<b>Recommended oil for lubrication</b>	ISO VG32(Servo system 32)
<b>Ambient/Medium temperature</b>	5°-60°C
<b>Flow</b>	Inlet & Outlet Port- G 1/8" - 774 LPM@10 bar G 1/4" - 1000 LPM @ 10 bar G 1/2" - 2930 LPM @ 10 bar
<b>Electrical</b>	
<b>Voltage(V) ± 10%</b>	AC (50Hz) – 24V,48V,110V,220V DC – 12V,24V,48V,110V
<b>Power consumption</b>	AC – 6VA, DC – 6W
<b>Duty cycle</b>	Continuous
<b>Class of insulation</b>	<b>Class F</b>
<b>Packaging Dimension(mm)</b>	Inlet & Outlet Port - A / B / C G1/4" -113 / 25 / 38 G1/2" -130 / 50 / 38 G1/8" - 113 / 25 / 38

<b>32S</b>	<b>18</b>	<b>MO</b>	<b>SS</b>	<b>O</b>	<b>0</b>
<b>Code</b>	<b>Inlet/Outlet Port</b>	<b>Exhaust Port</b>	<b>Code</b>	<b>Function</b>	<b>Code</b>
18.....	G 1/8"	G 1/8"	MO.....	Single Solenoid	C.....
14.....	G 1/4"	G 1/8"	MX.....		O.....
12.....	G 1/2"	G 1/2"			

#### Order Code:-

While ordering valve, please mention the suffix given above.

#### Example:-

The ordering no. for 3X2 Single solenoid without manual override normally open valve with port size G1/8" is **32S18MOSSO0**.