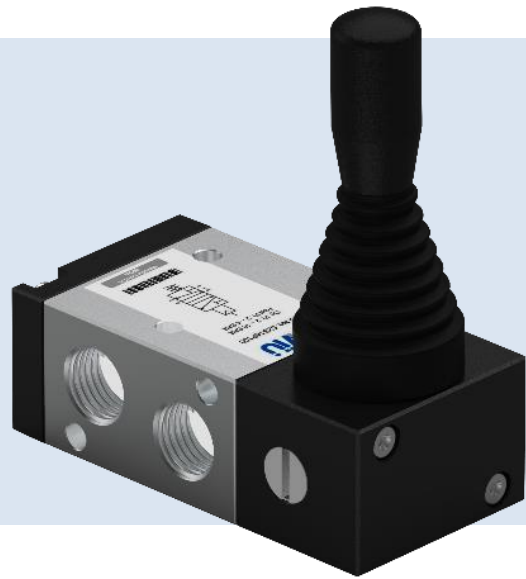
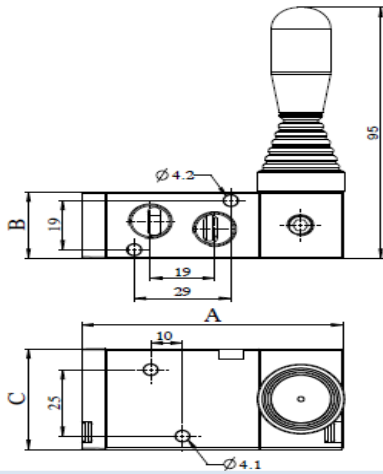


## 3X2 Manual Hand Lever Operated Valve



### Technical Data

A 3/2 manual lever operated valve is a type of standard mechanical valve that are operated manually by hand lever.

Hand lever operated valves find their application in the systems where manual control is needed for the actuation or deactuation of pneumatic actuators such as cylinders, grippers etc.

Normally open and normally closed are the two variants available in 3/2 hand lever operated valves.

Namur type of valves is also available.

Design features and materials

**Aluminum parts** Aluminum alloy

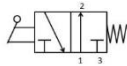
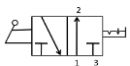
**Steel Parts** Steel with surface treatment

**Springs** Spring steel with surface treatment or S.S.

**Plastic parts** POM, PA, Nylon

**Sealing elements** Nitrile rubber

#### Circuit function



Normally Open with detent

Normally Open with spring return



Normally Closed with detent

Normally Closed with spring return

<b>Model</b>	<b>32</b>
<b>Design</b>	Spool type
<b>Medium</b>	Compressed air- Dry, filtered, Lubricated
<b>Working Pressure range</b>	2-10 Bar
<b>External Pilot pressure</b>	2-4 Bar
<b>Recommended oil for lubrication</b>	ISO VG32(Servo system 32)
<b>Ambient/Medium temperature</b>	5°-60°C
<b>Flow</b>	Inlet & Outlet Port-
	G 1/8" - 774 LPM@10 bar
	G 1/4" - 1000 LPM @ 10 bar
	G 1/2" - 2930 LPM @ 10 bar
<b>Packaging Dimensions(mm)</b>	Inlet & Outlet Port - A / B / C
	G1/4" -79 / 25 / 38
	G1/2" -96 / 50 / 38
	G1/8" - 79 / 25 / 38

<b>32S</b>	<b>18</b>	<b>HD</b>	<b>O</b>	<b>0</b>
<b>Code</b>	<b>Inlet/Outlet Port</b>	<b>Exhaust Port</b>	<b>Code</b>	<b>Function</b>
18.....	G 1/8"	G 1/8"	HD.....	Detent type
14.....	G 1/4"	G 1/8"	HS.....	Spring Return type
12.....	G 1/2"	G 1/2"		
<b>Code</b>	<b>Function</b>	<b>Code</b>	<b>Function</b>	<b>Code</b>
O.....	Normally Open	O.....	Normally Open	0.....
C.....	Normally Closed	C.....	Normally Closed	0.....
				Type
				W/o Namur

#### Order Code:-

While ordering valve, please mention the suffix given above.

#### Example:-

The ordering no. for 3X2 Manual hand lever operated normally open valve with port size G1/8" is **32S18HD00**.