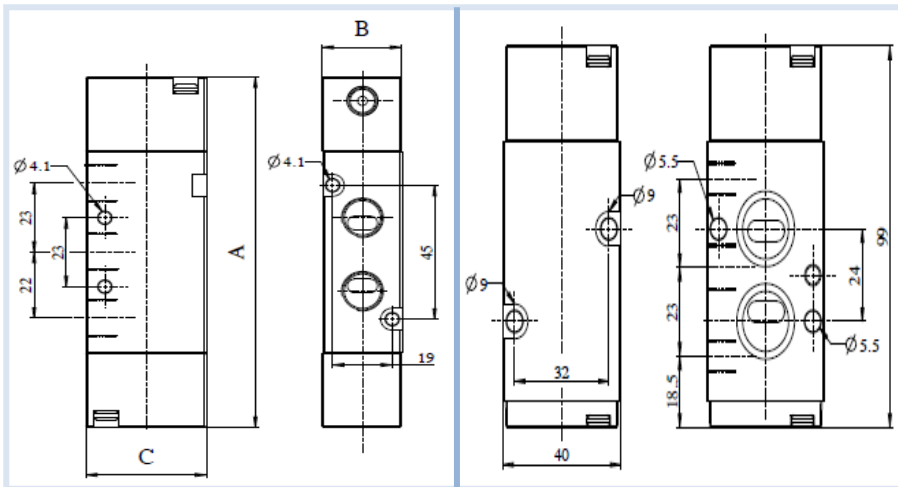


5X2 Single External Pilot Operated Valve



Technical Data

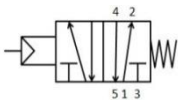
A 5/2 single external pilot with spring return valve is a type of standard mechanical valve that are activated by external pilot pressure. In standard industrial applications, they have been used where pressure is supplied to an external port to switch the main valve.

Namur type is also available which are directly mounted on pneumatic actuators.

Design features and materials

Aluminum parts	Aluminum alloy
Steel Parts	Steel with surface treatment
Springs	Spring steel with surface treatment or S.S.
Plastic parts	POM, PA, Nylon
Sealing elements	Nitrile rubber

Circuit function



Model	52
Design	Spool type
Medium	Compressed air- Dry, filtered, Lubricated
Working Pressure range	2-10 Bar
External Pilot pressure	2-4 Bar
Recommended oil for lubrication	ISO VG32(Servo system 32)
Ambient/Medium temperature	5°-60°C
Flow	Inlet & Outlet Port- G 1/8" - 774 LPM@10 bar G 1/4" - 1000 LPM @ 10 bar G 1/2" - 2930 LPM @ 10 bar
Pilot port Size	G 1/8"
Packaging Dimensions(mm)	Inlet & Outlet Port - A / B / C G1/4" - 99 / 25 / 38 G1/2" - 127 / 50 / 38 G1/8" - 99 / 25 / 38

52S	18	P1	00
Code	Inlet/Outlet Port	Exhaust Port	Code
18.....	G 1/8"	G 1/8"	P1.....
14.....	G 1/4"	G 1/8"	
12.....	G 1/2"	G 1/2"	
			Function
			Single External Pilot with spring return
			Code
			01.....
			00.....
			Type
			Namur
			W/o Namur

Order Code:-

While ordering valve, please mention the suffix given above.

Example:-

The ordering no. for 5X2 Single external pilot valve with port size G1/8" is **52S18P100**.