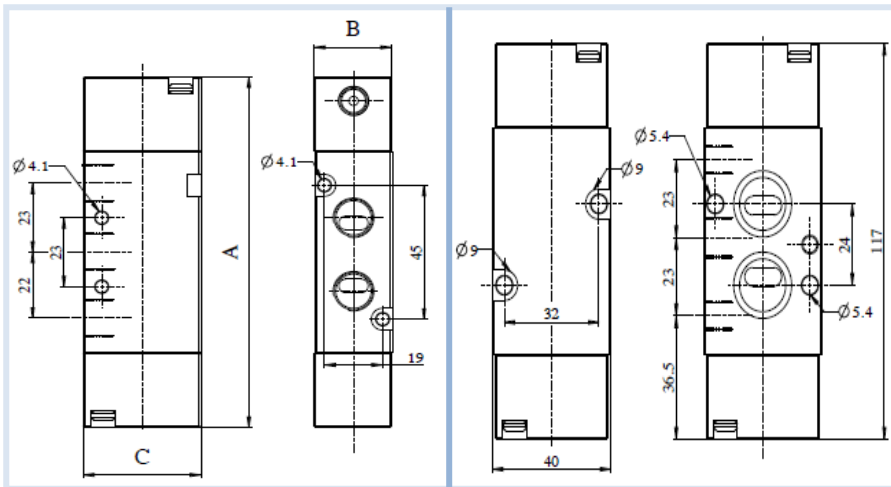


5X2 Double External Pilot Operated Valve



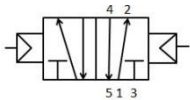
Technical Data

A 5/2 double external pilot is a type of standard mechanical valve that are activated by external pilot pressure. They find their application in pneumatic circuits where both the positions need to be controlled by external pilot pressure. Namur type valves are available with both the outlet directly connected to the pneumatic actuators or with rotary actuators.

Design features and materials

Aluminum parts	Aluminum alloy
Steel Parts	Steel with surface treatment
Springs	Spring steel with surface treatment or S.S.
Plastic parts	POM, PA, Nylon
Sealing elements	Nitrile rubber

Circuit function



Model	52
Design	Spool type
Medium	Compressed air- Dry, filtered, Lubricated
Working Pressure range	2-10 Bar
External Pilot pressure	2-4 Bar
Recommended oil for lubrication	ISO VG32(Servo system 32)
Ambient/Medium temperature	5°-60°C
Flow	Inlet & Outlet Port- G 1/8" - 774 LPM@10 bar G 1/4" - 1000 LPM @ 10 bar G 1/2" - 2930 LPM @ 10 bar
Pilot port Size	G 1/8"
Packaging Dimensions(mm)	Inlet & Outlet Port - A / B / C G1/4" -117 / 25 / 38 G1/2" -145 / 50 / 38 G1/8" - 117 / 25 / 38



Code	Inlet/Outlet Port	Exhaust Port	Code	Function
18.....	G 1/8"	G 1/8"	DX.....	Double External Pilot
14.....	G 1/4"	G 1/8"		
12.....	G 1/2"	G 1/2"		

Code	Type
01.....	Namur
00.....	W/o Namur

Order Code:-

While ordering valve, please mention the suffix given above.

Example:-

The ordering no. for 5X2 Double external pilot valve with port size G1/8" is **52S18DX00**.