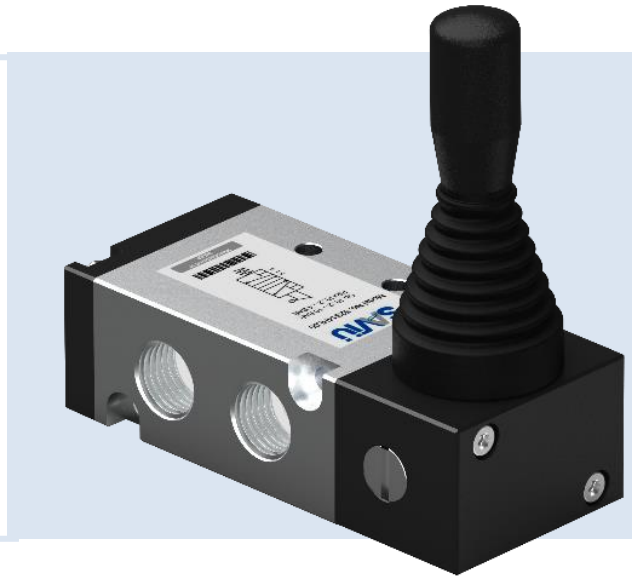
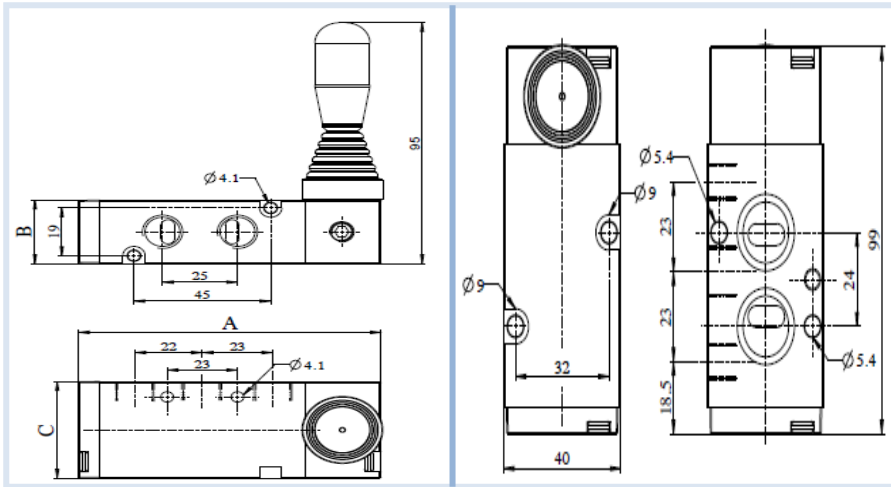


5X2 Manual Lever Operated Valve



Technical Data

A 5/2 manual lever operated valve is a type of standard mechanical valve that are operated manually by hand lever.

Hand lever operated valves find their application in the systems where manual control is needed for the actuation or deactuation of pneumatic actuators such as cylinders, grippers etc.

Namur type of valves is also available in hand lever operated valves.

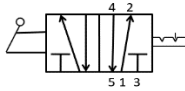
Design features and materials

Aluminum parts	Aluminum alloy
Steel Parts	Steel with surface treatment
Springs	Spring steel with surface treatment or S.S.
Plastic parts	POM, PA, Nylon
Sealing elements	Nitrile rubber

Circuit function



Spring Return Type



Detent Type

Model	52
Design	Spool type
Medium	Compressed air- Dry, filtered, Lubricated
Working Pressure range	2-10 Bar
External Pilot pressure	2-4 Bar
Recommended oil for lubrication	ISO VG32(Servo system 32)
Ambient/Medium temperature	5°-60°C
Flow	Inlet & Outlet Port- G 1/8" - 774 LPM@10 bar G 1/4" - 1000 LPM @10 bar G 1/2" - 2930 LPM @10 bar
Packaging Dimensions(mm)	Inlet & Outlet Port - A / B / C G1/4" -99 / 25 / 38 G1/2" -127 / 50 / 38 G1/8"- 99 / 25 / 38



Code	Inlet/Outlet Port	Exhaust Port
18.....	G 1/8"	G 1/8"
14.....	G 1/4"	G 1/8"
12.....	G 1/2"	G 1/2"

Code	Function
HD.....	Detent type
HS.....	Spring return type

Code	Type
01.....	Namur
00.....	W/o Namur

Order Code:-

While ordering valve, please mention the suffix given above.

Example:-

The ordering no. for 5X2 Manual hand lever operated valve with detent type and port size G1/8" is **52S18HD00**.