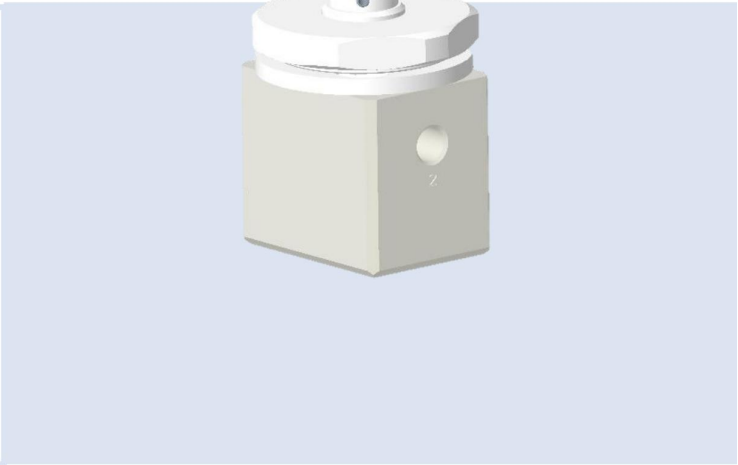
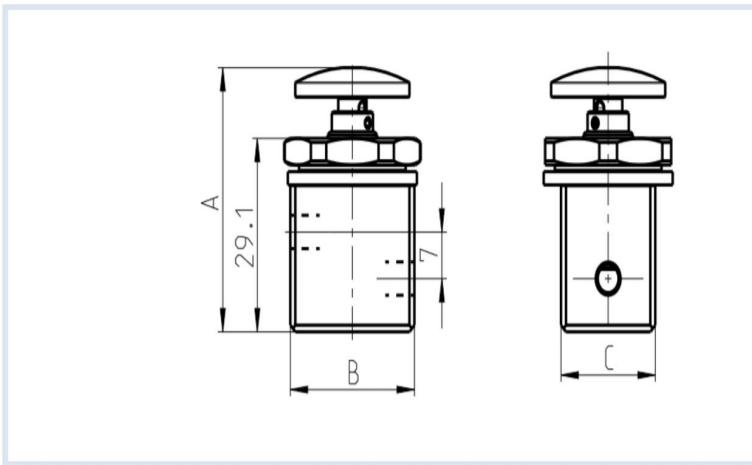


3X2 Manual Push Button Operated Valve



Technical Data

A 3/2 push Button operated valve is a type of standard mechanical valve that is activated manually by pushing knob.

Push Button operated valves find their application in the systems where manual control is needed for the actuation or deactuation of pneumatic actuators such as cylinders, grippers etc.

Normally open and normally closed are the two variants available in 3/2 push button operated valves.

Namur type of valves is also available.

Design features and materials

Aluminum parts Aluminum alloy

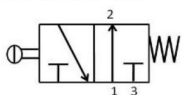
Steel Parts Steel with surface treatment

Springs Spring steel with surface treatment or S.S.

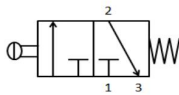
Plastic parts POM, PA, Nylon

Sealing elements Nitrile rubber

Circuit function

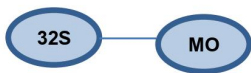


Normally Open



Normally Closed

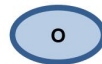
Model	32
Design	Spool type
Medium	Compressed air- Dry, filtered, Lubricated
Working Pressure range	2-10 Bar
External Pilot pressure	2-4 Bar
Recommended oil for lubrication	ISO VG32(Servo system 32)
Ambient/Medium temperature	5°-60°C
Flow	Inlet & Outlet Port- M5 - 50 LPM @10 bar
Packaging Dimensions(mm)	Inlet & Outlet Port - A / B / C G1/8" - 39.7 / 25 / 19
End Connection	M5



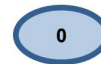
Code Without Manual
MO..... Override



Code Function
PB..... Push button
Operated



Code Function
O..... Normally Open
C..... Normally Closed



Code Type
0..... W/o Namur

Order Code:-

While ordering valve, please mention the suffix given above.

Example:-The ordering no. for 3X2 Push Button operated normally open valve with port size M5 is **32SMOPB00**.